

The image features a gradient background transitioning from pink on the left to orange on the right. In the center, there is a stylized brain graphic composed of various geometric shapes. The Cortexyme logo, consisting of a circular icon with two dots and the word "CORTEXME" in a sans-serif font, is overlaid on the brain graphic.

CORTEXME

**GAIN Trial Top-Line Results
Investor Presentation**

Disclaimer

Certain information contained in this presentation and statements made orally during this presentation relate to or are based on studies, publications, surveys and other data obtained from third-party sources and Cortexyme's own internal estimates and research. While Cortexyme believes these third-party sources to be reliable as of the date of this presentation, it has not independently verified, and makes no representation as to the adequacy, fairness, accuracy or completeness of, any information obtained from third-party sources. While Cortexyme believes its internal research is reliable, such research has not been verified by any independent source. This presentation contains forward-looking statements, including with respect to the GAIN Trial and related results, the potential of atuzaginstat to treat Alzheimer's disease, periodontal disease, and other potential indications; the timing of announcements and updates relating to its clinical trials and related data; the potential therapeutic benefits, safety and efficacy of the company's product candidate and statements about further development of atuzaginstat. Forward-looking statements are neither historical facts nor assurances of future performance. Instead, they are based on Cortexyme's current beliefs, expectations and assumptions regarding the future of its business, its future plans and strategies, its clinical results and other future conditions. All statements other than statements of historical facts contained in this presentation, including statements regarding future results of operations and financial position, business strategy, current and prospective markets or products, clinical activities, regulatory approvals, degree of market acceptance, and plans and objectives of management for future operations, are forward-looking statements. The words "may," "will," "should," "expect," "plan," "anticipate," "could," "intend," "target," "project," "estimate," "believe," "predict," "potential" or "continue" or the negative of these terms or other similar expressions are intended to identify forward-looking statements, although not all forward-looking statements contain these identifying words. The forward-looking statements in this presentation represent Cortexyme's views as of the date of this presentation. Although Cortexyme believes the expectations reflected in such forward-looking statements are reasonable, it can give no assurance that such expectations will prove to be correct. Accordingly, readers are cautioned not to place undue reliance on these forward-looking statements. Factors that could cause actual results to differ include, but are not limited to, the risks and uncertainties described in the section titled "Risk Factors" in Cortexyme's Annual Report on Form 10-K filed with the Securities and Exchange Commission on March 1, 2021, its Quarterly Report on Form 10-Q filed with the SEC on August 6, 2021, and other reports as filed with the SEC. Forward-looking statements contained in this news release are made as of this date, and Cortexyme undertakes no duty to update such information except as required under applicable law.

Phase 2/3 GAIN Trial Top-Line Results Mark Major Milestone in Alzheimer's



Chris Lowe

Chief Operating Officer & Chief Financial Officer
Cortexyme, Inc.



Casey Lynch

Chief Executive Officer & Co-Founder
Cortexyme, Inc.



Michael Detke, MD, PhD

Chief Medical Officer
Cortexyme, Inc.

GAIN Trial demonstrated relationship of reduction of *P. gingivalis* infection and slowing of Alzheimer's disease progression

- Major milestones achieved in advancing our understanding of Alzheimer's disease and profile of atuzaginstat
- Overall cohort did not meet statistical significance in co-primary cognitive (ADAS-Cog11) and functional (ADCS-ADL) endpoints
- 57% slowing ($p=0.02$) of cognitive decline in pre-specified subgroup with *P. gingivalis* detected in saliva ($n=242$, 37.6% of participants) as measured by ADAS-Cog11.
- Similar results seen in prespecified subgroup of participants with high serum anti-*P. gingivalis* antibodies ($n=316$, 50% of participants)
- Prespecified correlations analysis: reduction of *P. gingivalis* at 24 weeks significantly correlated with benefits at the end of treatment on ADAS-Cog11, CDR-SB, MMSE, and a beneficial trend on ADCS-ADL
- Differentiated mild to moderate population, oral administration and safety profile

GAIN baseline demographics: population and stratification equivalent across groups

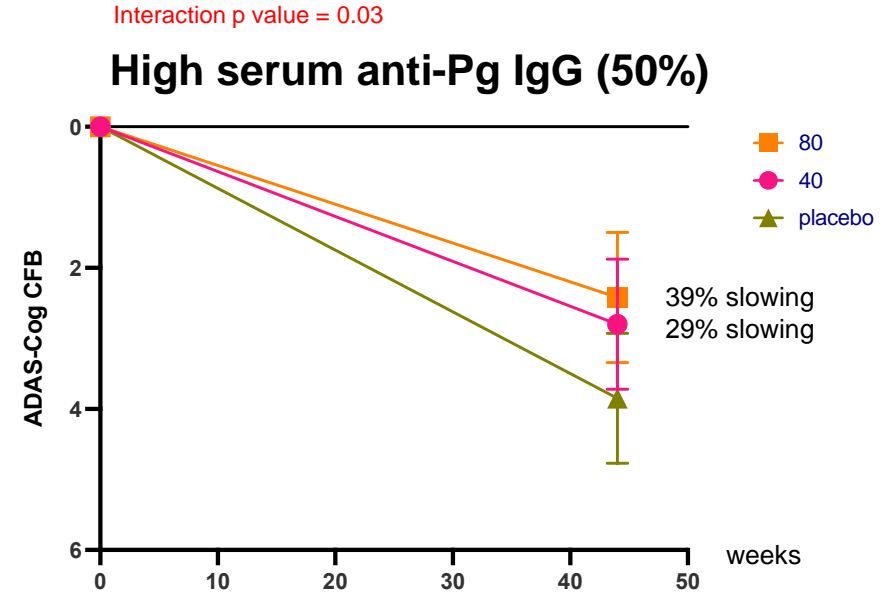
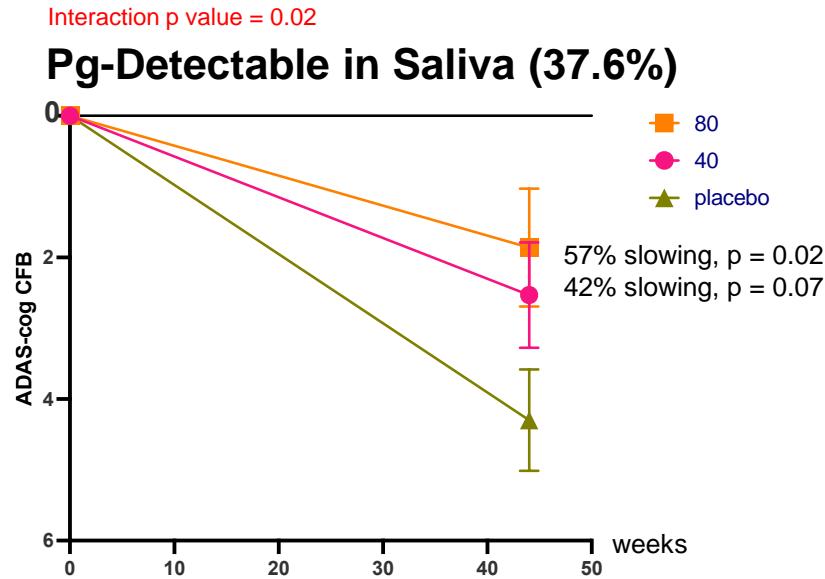
Parameter	Placebo	40 mg BID	80 mg BID
n	217	212	214
Mean Age at Informed Consent (years)	69.5	68.6	69.3
Sex			
Male	92 (42%)	89 (42%)	97 (45%)
Female	125 (58%)	123 (58%)	117 (55%)
Race and Ethnicity			
Black or African American	17 (8%)	12 (6%)	13 (6%)
Hispanic or Latino	25 (12%)	18 (9%)	35 (16%)
White, Not Hispanic/Latino	187 (86%)	188 (89%)	174 (81%)
Other	2 (1%)	6 (3%)	1 (1%)

Parameter	Placebo	40 mg BID	80 mg BID
MMSE*			
Moderate ≥ 12 to ≤ 18	110 (51%)	107 (51%)	107 (50%)
Mild ≥ 19 to ≤ 24	107 (49%)	105 (50%)	107 (50%)
ADAS-Cog Mean	23.9	23.5	23.7
ADCS-ADL Mean	60.4	60	59.9
ApoE4 Carriers*	140 (65%)	137 (65%)	137 (64%)
Non-Carriers	77 (36%)	75 (35%)	77 (36%)

*Randomization stratified by Mild/Moderate and ApoE4 carriers +/-

ADAS-Cog benefits in prespecified subgroups based on *P. gingivalis* infection

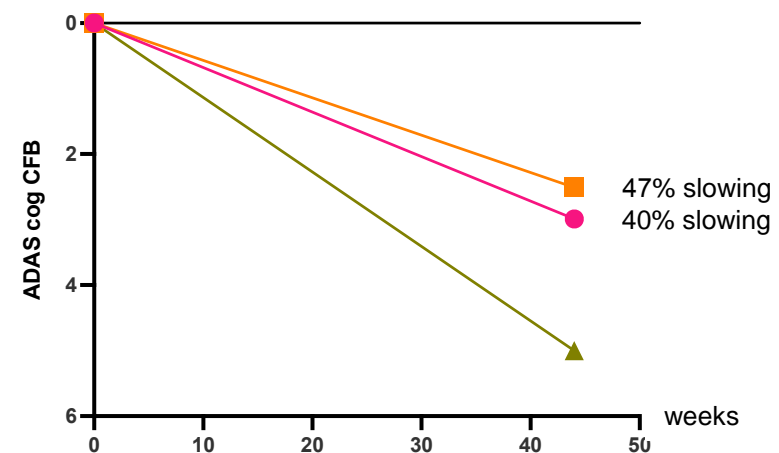
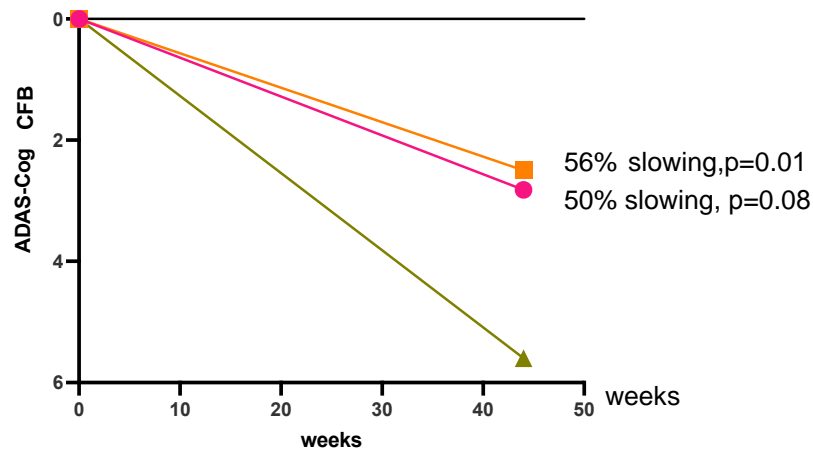
**MMRM
Parametric**



80	74	48
40	86	62
Placebo	82	74

80	99	67
40	113	75
Placebo	104	92

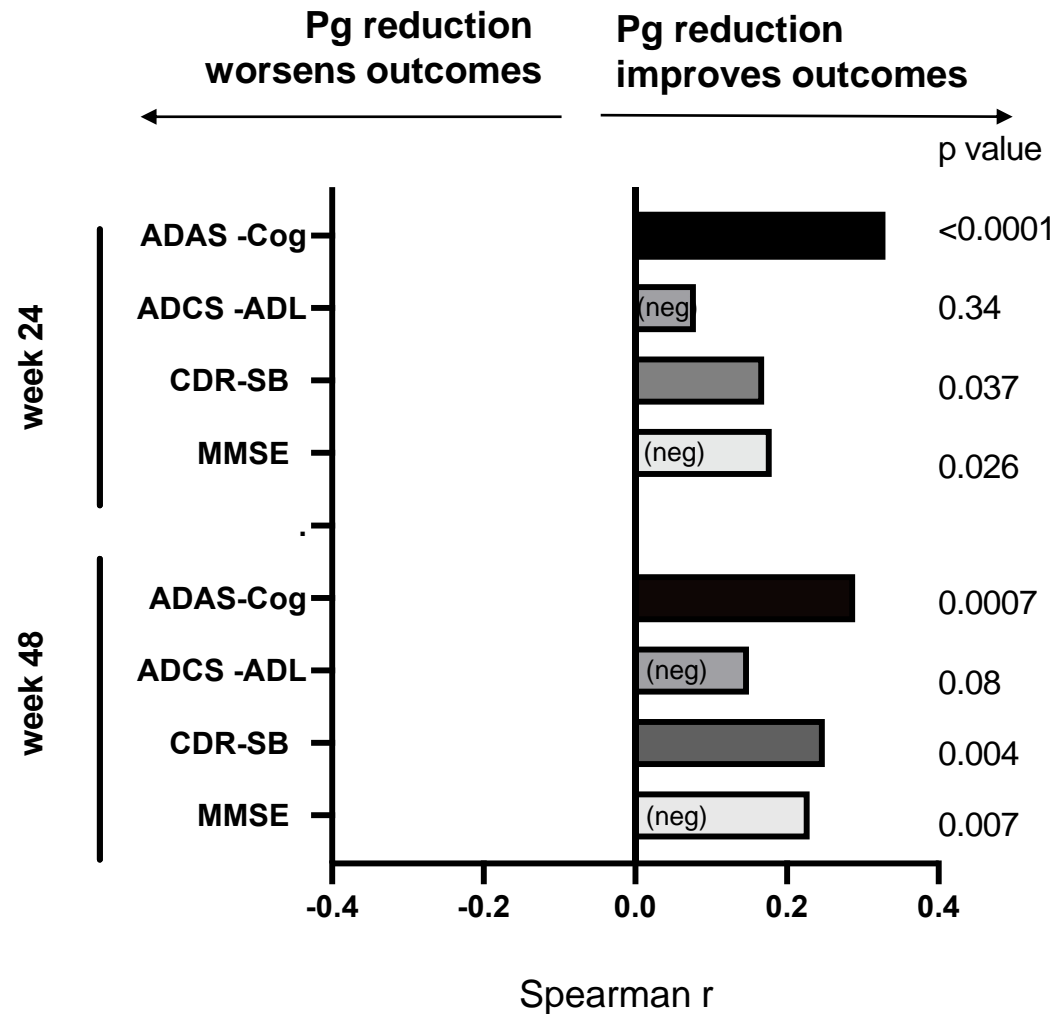
Nonparametric
analysis specified
in SAP by
non-normality
of data



Improvement is up on all scales

Prespecified interaction of target engagement and outcomes

Change in *P. gingivalis* in saliva at 24 weeks correlates to clinical outcomes



Safety summary: Most Common Adverse Events (TEAEs)

	Placebo (n= 217)	40 mg BID (n= 212)	80 mg BID (n= 214)
Any TEAE	147 (67.7%)	170 (80.2%)	164 (76.6%)
Diarrhea	7 (3.2%)	34 (16.0%)	27 (12.6%)
ALT increased	4 (1.8%)	20 (9.4%)	37 (17.3%)
AST increased	3 (1.4%)	20 (9.4%)	34 (15.9%)
Urinary tract infection	21 (9.7%)	16 (7.5%)	28 (13.1%)
Lipase increased	11 (5.1%)	13 (6.1%)	20 (9.3%)
Headache	14 (6.5%)	18 (8.5%)	15 (7%)
Amylase increased	8 (3.7%)	12 (5.7%)	16 (7.5%)
Nausea	4 (1.8%)	13 (6.1%)	13 (6.1%)
Agitation	7 (3.2%)	9 (4.2%)	10 (4.7%)
Decreased appetite	2 (0.9%)	9 (4.2%)	10 (4.7%)
Fall	4 (1.8%)	7 (3.3%)	11 (5.1%)
Abdominal pain	3 (1.4%)	7 (3.3%)	11 (5.1%)
<i>TEAEs potentially of interest with incidence lower than 5%:</i>			
COVID-19	5 (2.3%)	8 (3.8%)	2 (0.9%)

FINDINGS

- Atuzaginstat is well tolerated overall
- Most common drug-associated AE: diarrhea, also associated with some other GI AEs
- Dose dependent liver enzyme elevations, may be mitigated by titration
- Virtually all cases of laboratory abnormalities were not clinically significant and were asymptomatic
- No increase in ARIA (microhemorrhage and edema) or superficial siderosis

Key takeaways

- Co-primary endpoints were not met in the broad intent-to-treat study population
- Randomized, double-blind, placebo-controlled trial results support the extensive research establishing *P. gingivalis* as a root cause of Alzheimer's Disease
- These *Pg*-AD patients are easily identified through saliva or simple blood tests, offering a convenient level of precision medicine atypical in Alzheimer's disease
- Prespecified interaction analysis shows significant interaction of high *Pg* subgroups with better outcomes
- Pre-specified subgroup with *Pg* DNA detectable in saliva (PG-DS) showed statistically and clinically significant superiority of atuzaginstat over placebo on cognition.
- Multiple pre-specified statistically and clinically significant correlations between reduction of bacterial load and improved clinical outcomes
- Differentiated safety profile, oral route of administration, patient population (both disease severity and *Pg* infection) from amyloid-targeted therapeutics